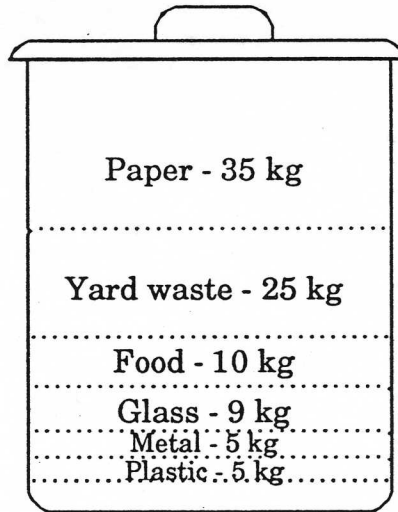


Another look at the garbage can

Let's look again at what makes up 100 kilograms of typical household garbage:

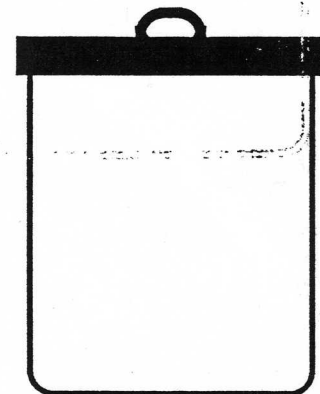
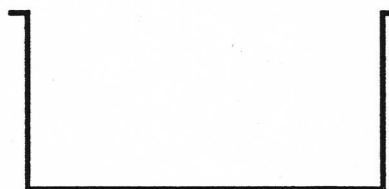
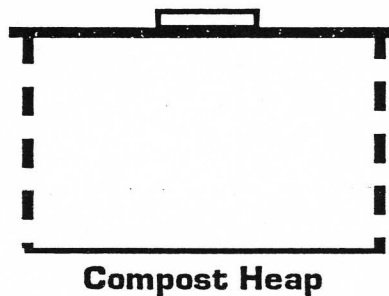


Now that we've talked about some ways of reducing, reusing and recycling, let's see what COULD be done with all of this waste if we had:

- a compost heap and
- a curbside recycling program for newspapers, corrugated cardboard, glass, metal and plastics.

In the diagram below, show where each type of waste should go (to the Compost Heap, Recycling Bin, or Garbage Can) by drawing it in the appropriate place.

| |
|--|
| Newspaper & corrugated cardboard - 18 kg |
| Other paper - 17 kg |
| Yard waste - 25 kg |
| Food - 10 kg |
| Glass - 9 kg |
| Metal - 5 kg |
| Plastic - 5 kg |
| Other - 11 kg |



Garbage Can

What a difference!